

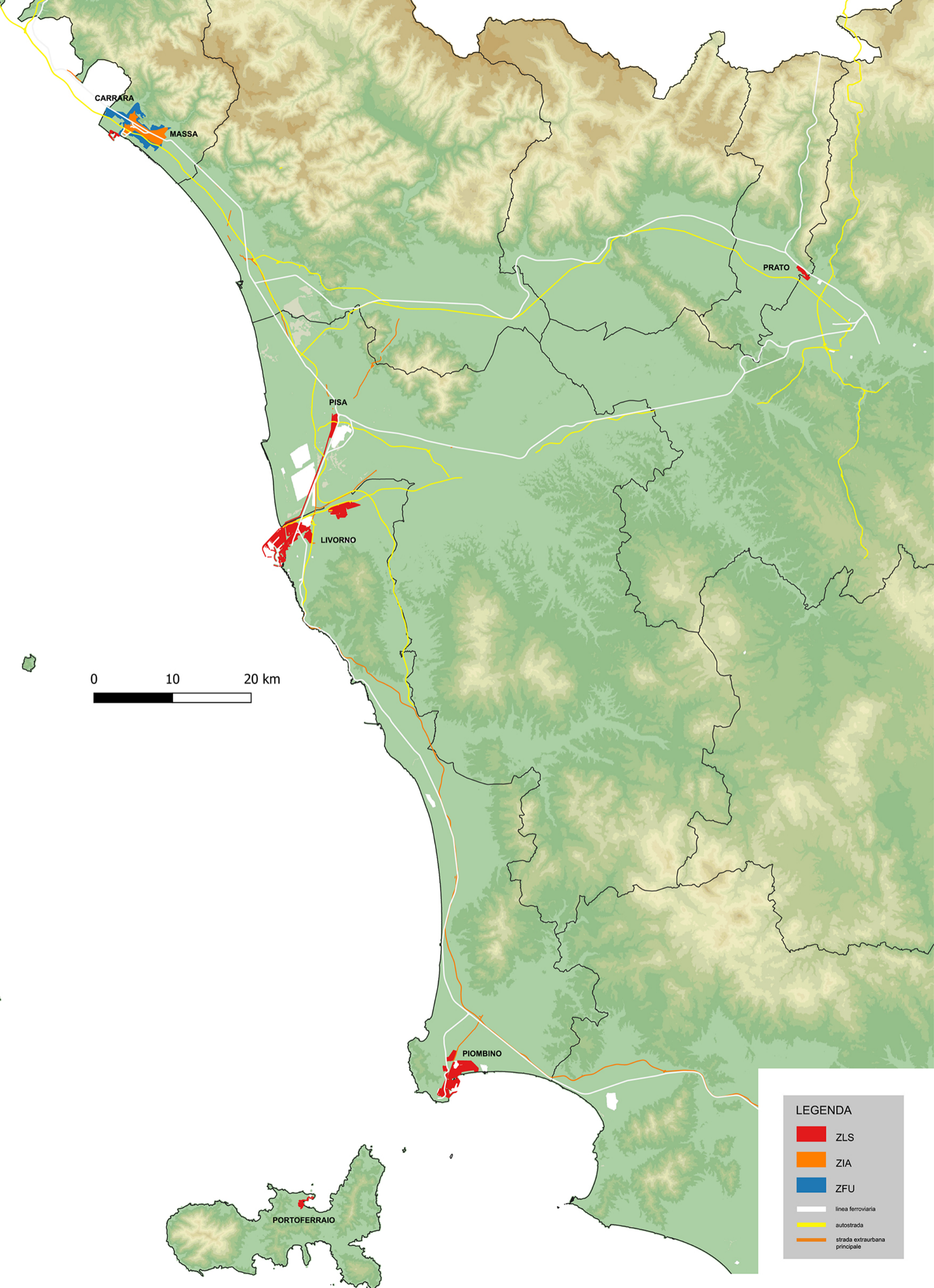
2020

ALLEGATI CARTOGRAFICI
alla
PROPOSTA PER L'ISTITUZIONE
DELLA ZONA LOGISTICA SPECIALE
DELLA REGIONE TOSCANA

GIUNTA REGIONALE TOSCANA

DIREZIONE ATTIVITA' PRODUTTIVE

16/06/2020



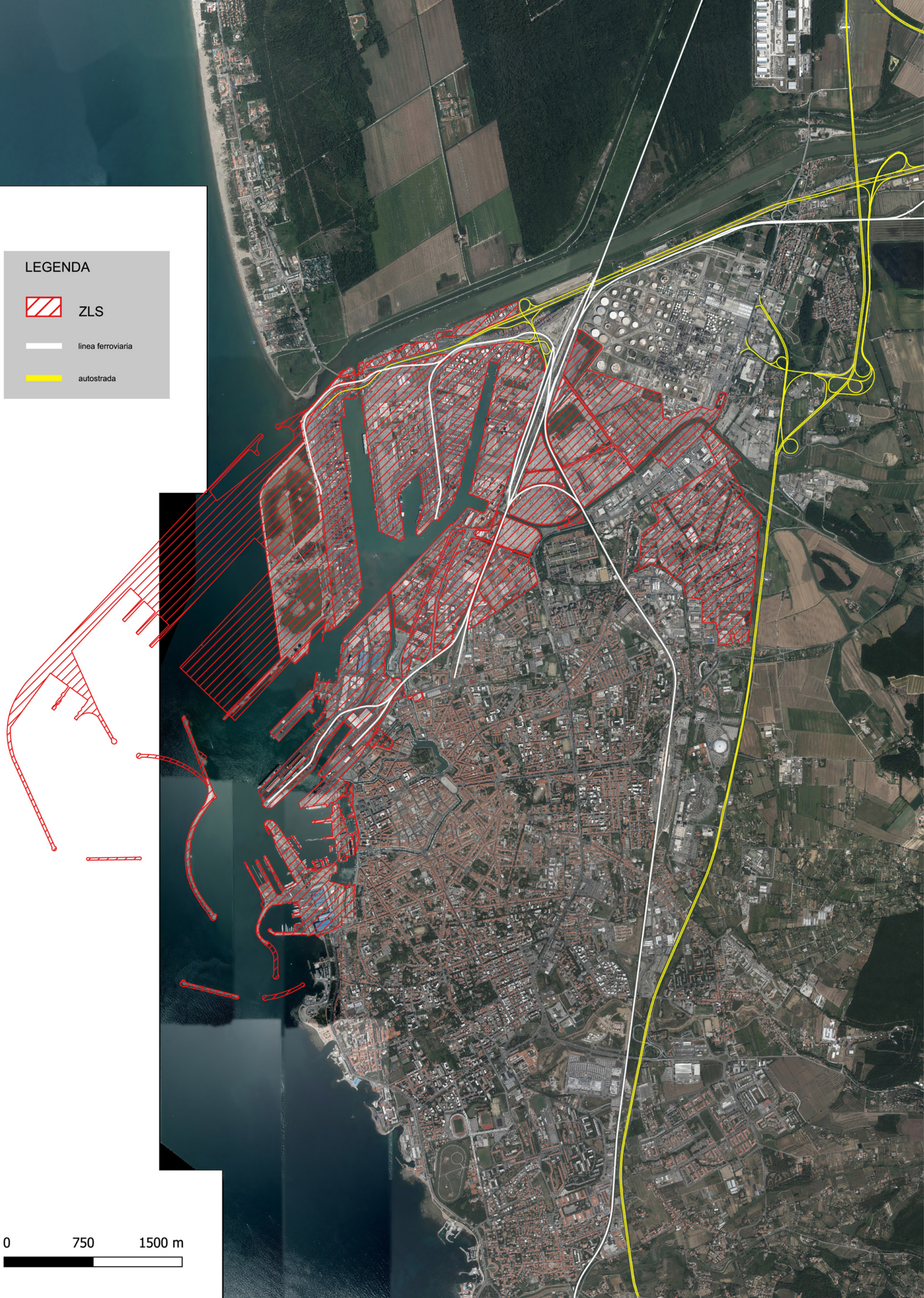
LEGENDA



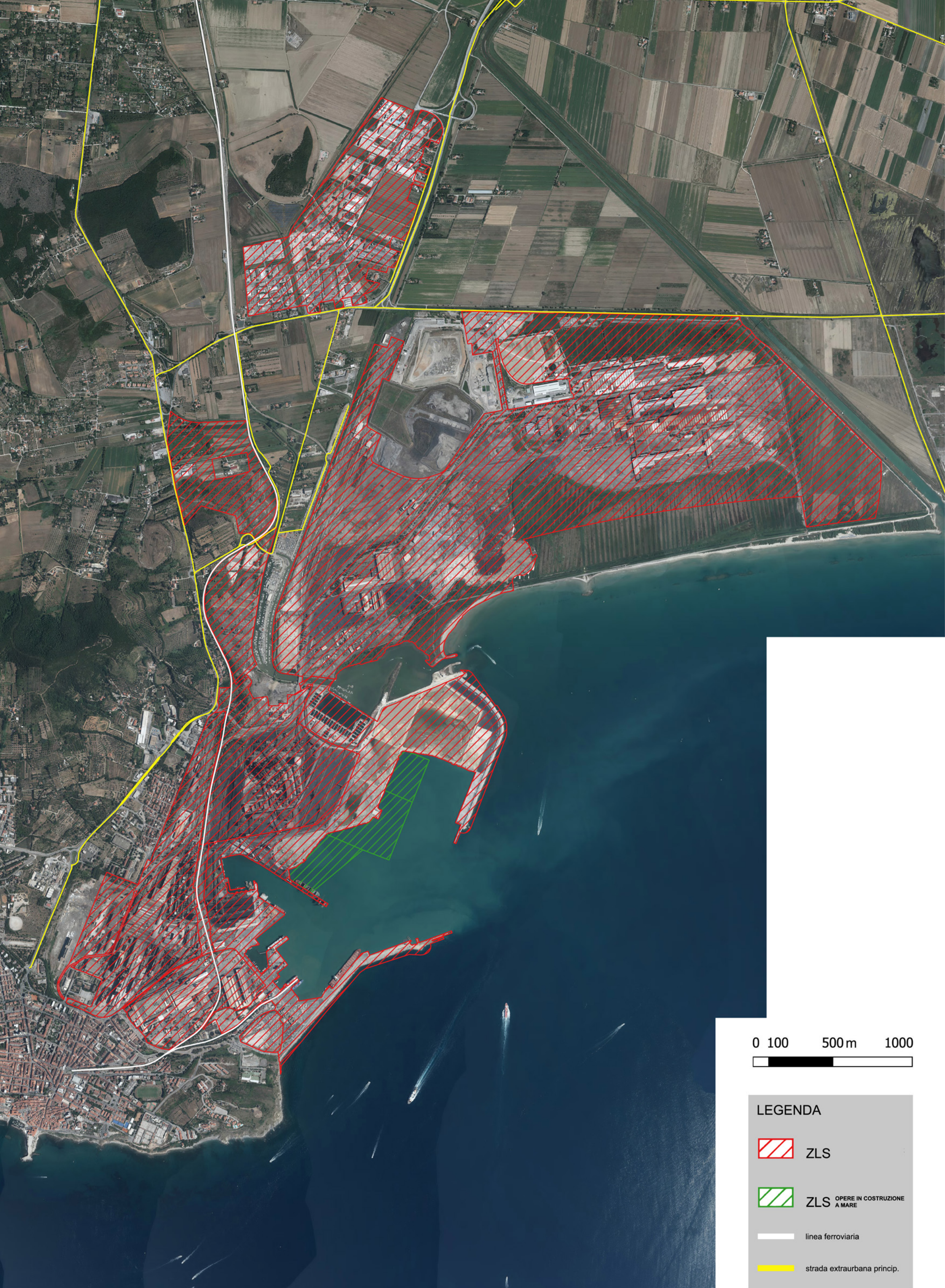
ZLS

— linea ferroviaria

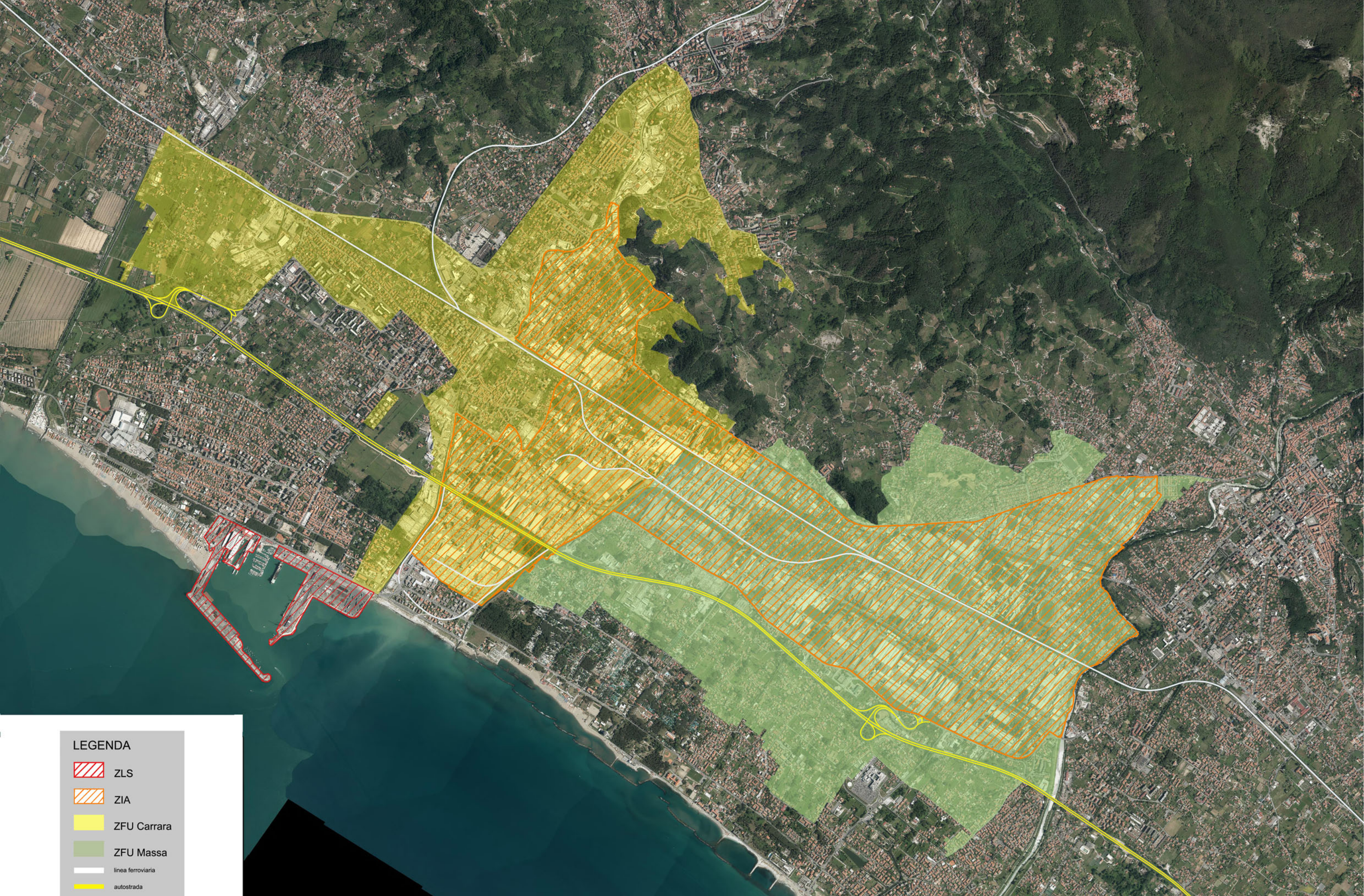
— autostrada



0 750 1500 m



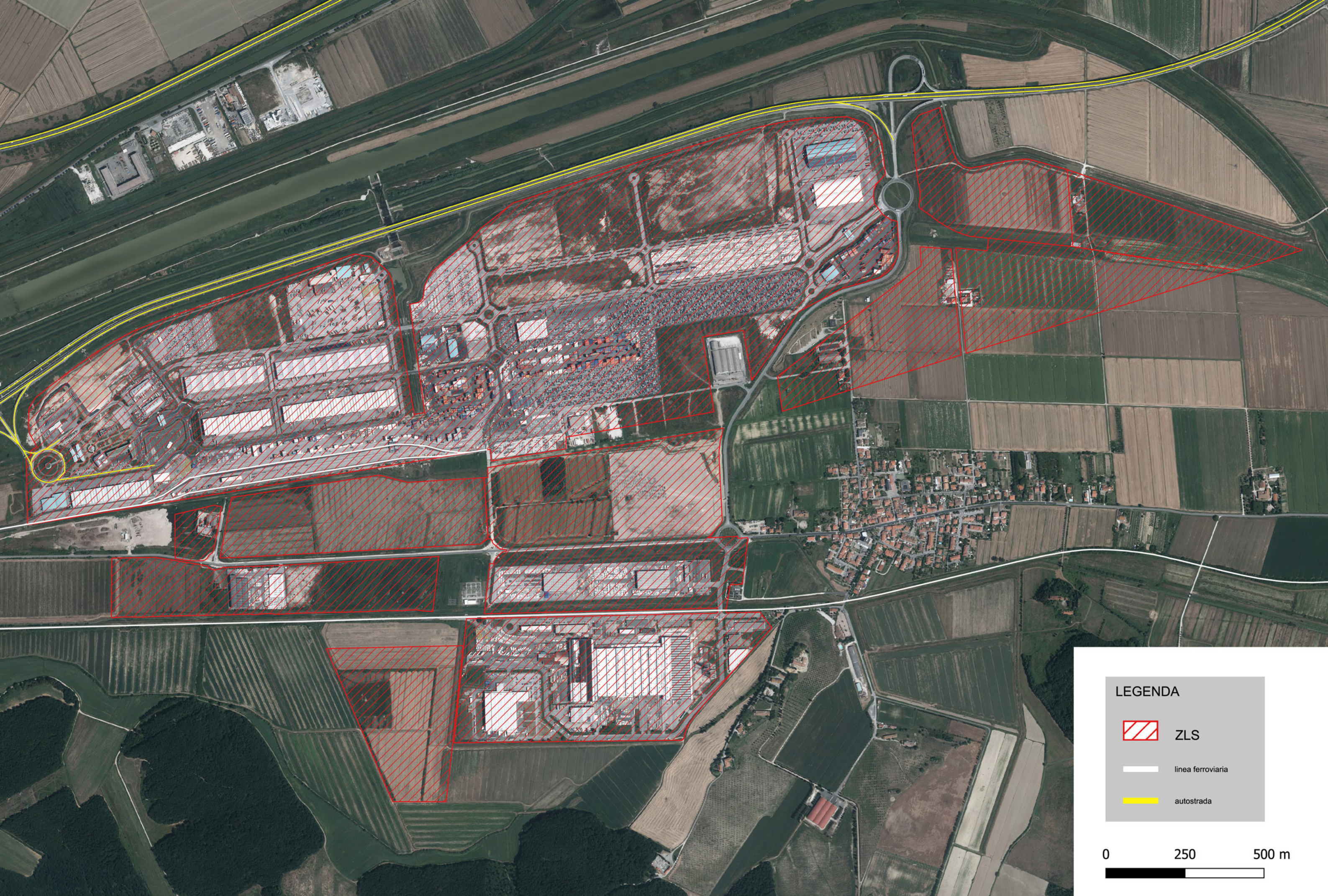




LEGENDA

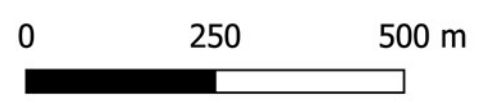
-  ZLS
-  ZIA
-  ZFU Carrara
-  ZFU Massa
-  linea ferroviaria
-  autostrada

0 1 1,5 km



LEGENDA

-  ZLS
-  linea ferroviaria
-  autostrada






0 250 500 m

LEGENDA

 ZLS

 linea ferroviaria

 autostrada




0 1 2 km

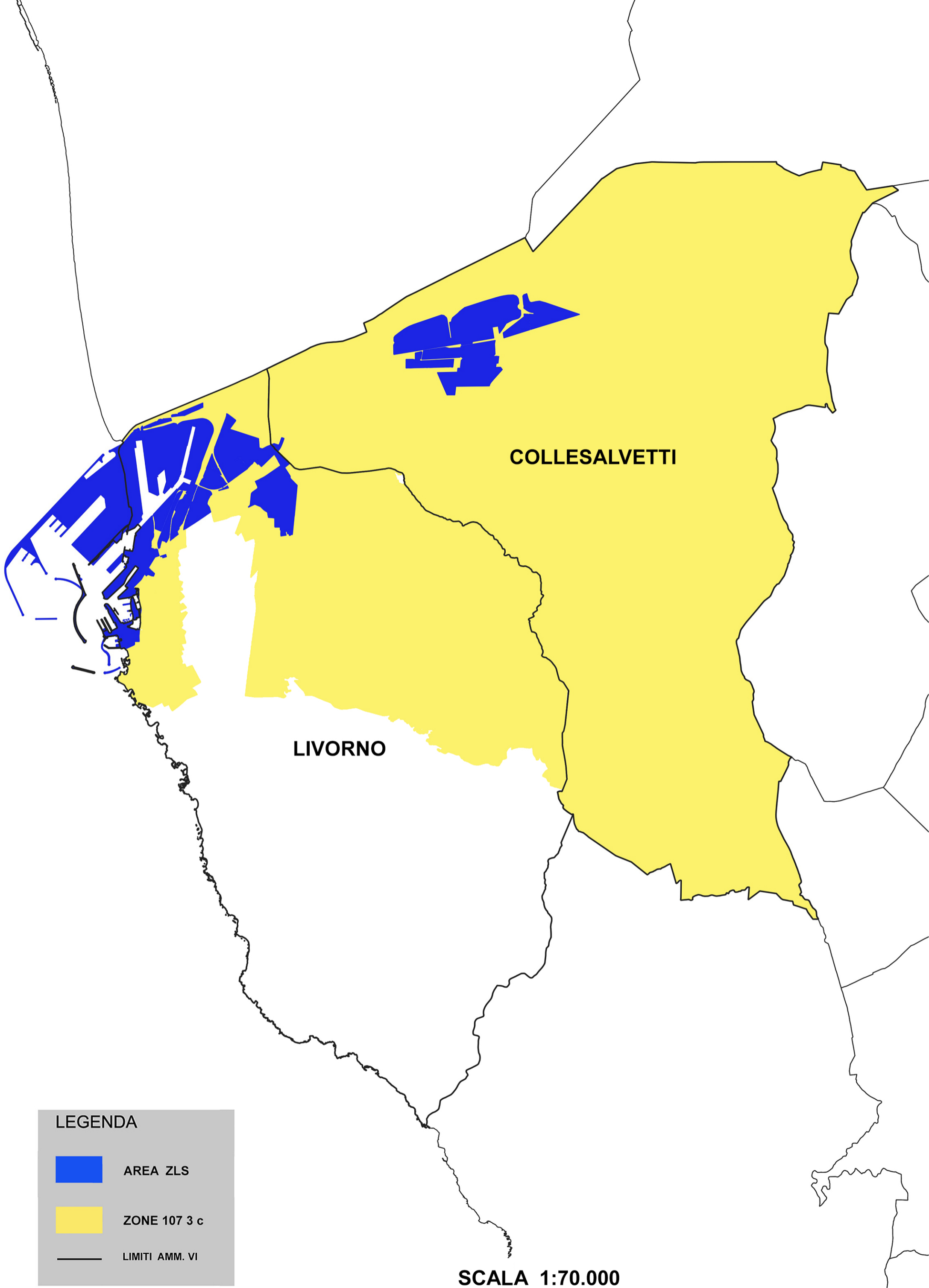
LEGENDA

 ZLS

 linea ferroviaria

 autostrada

Aeroporto Galileo Galilei (PISA) - Rappresentazione scala 1:35.000 a cura del Settore SITA di Regione Toscana (06.07.2020) su OFC 2016 AGEA (copyright Consorzio TeA)



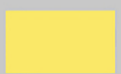
COLLESALVETTI

LIVORNO

LEGENDA



AREA ZLS

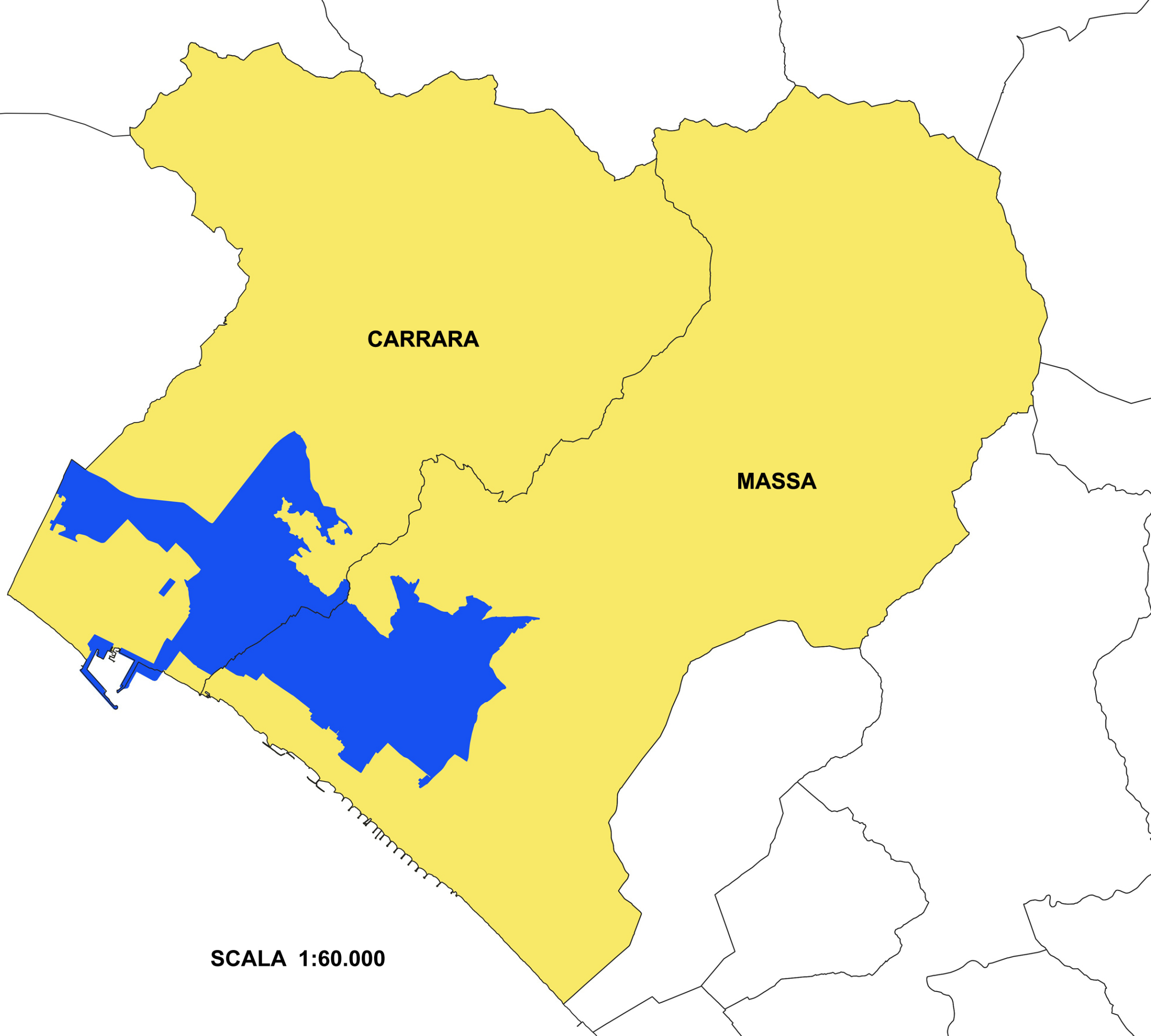


ZONE 107 3 c



LIMITI AMM. VI

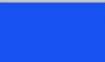


SCALA 1:70.000



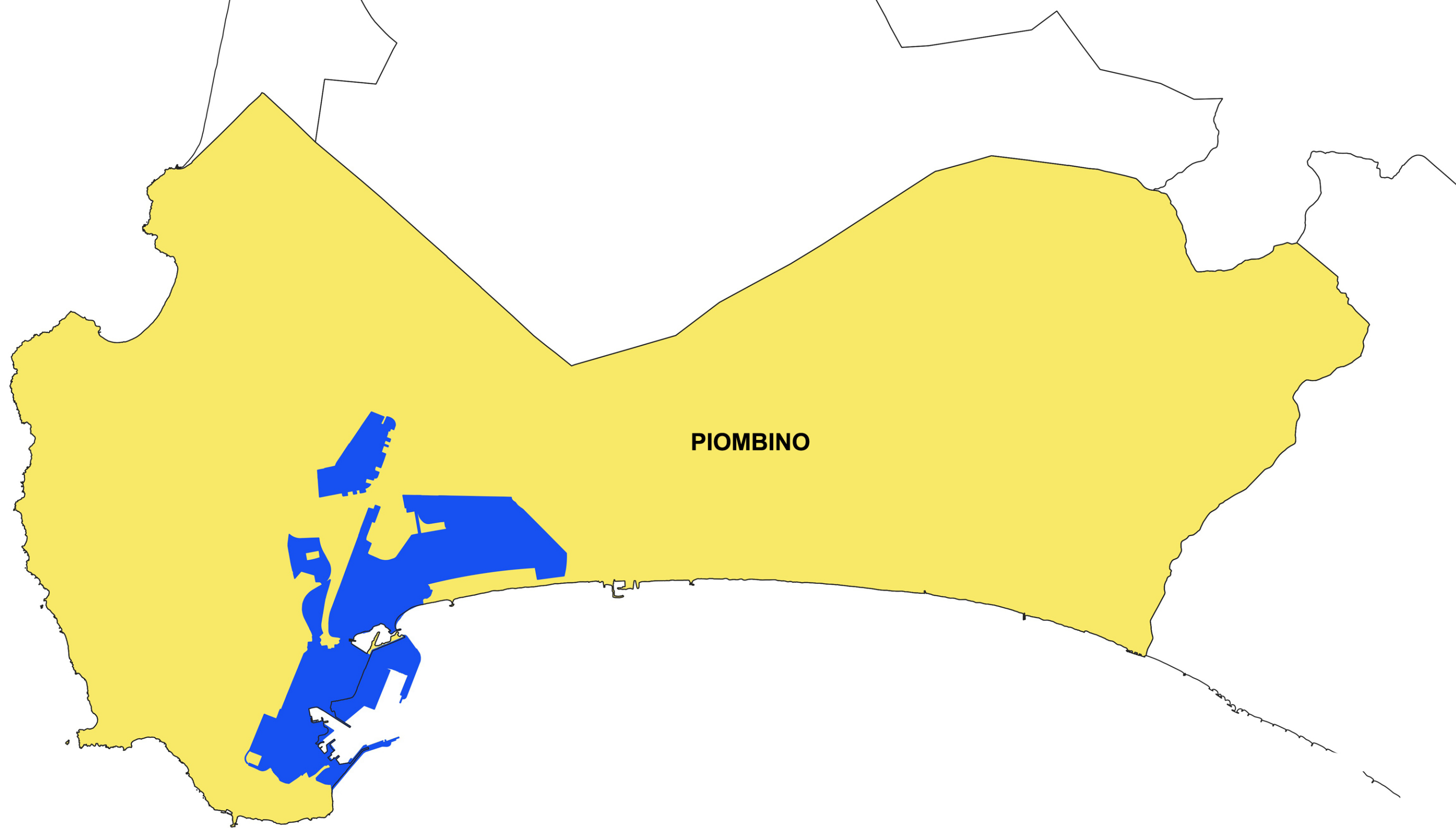
CARRARA

MASSA

LEGENDA


	AREA ZLS
	ZONE 107 3 c
	LIMITI AMM. VI

SCALA 1:60.000



PIOMBINO

LEGENDA

	AREA ZLS
	ZONE 107 3 c
	LIMITI AMM. VI

SCALA 1:60.000

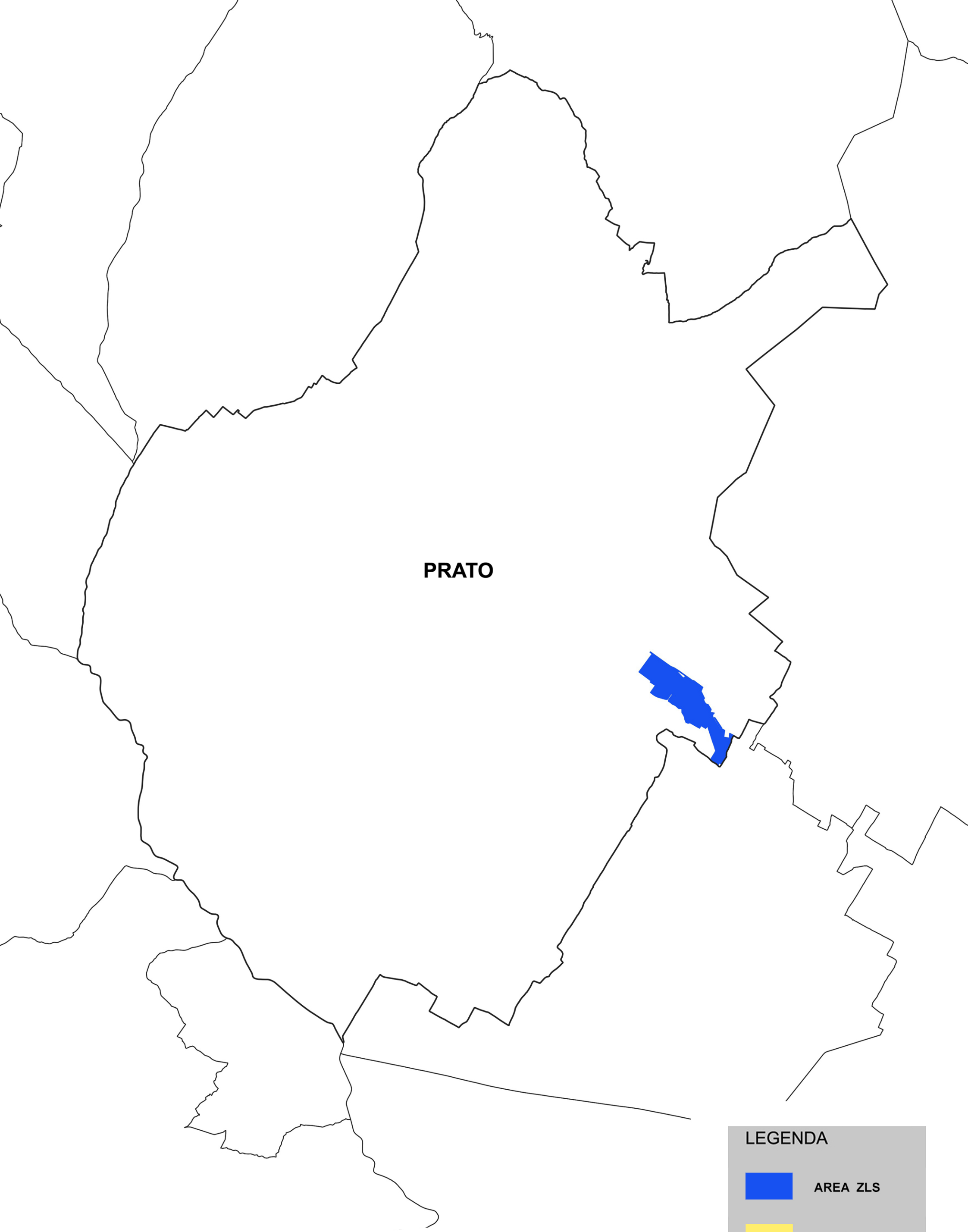


PORTOFERRAIO

SCALA 1:40.000

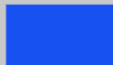


LEGENDA

	AREA ZLS
	ZONE 107 3 c
	LIMITI AMM. VI



PRATO

LEGENDA

-  AREA ZLS
-  ZONE 107 3 c
-  LIMITI AMM. VI

SCALA 1:50.000